

Webb

View[®]

Industry's most advanced integrated
baggage handling control system

Integrating the
key functions of:

- Supervisory Control
- Equipment Control
- Manual Encoding
- User Interface



*Increase baggage throughput
while assuring the highest bag
tracking accuracy*

Jervis B. Webb Company
MATERIAL HANDLING SYSTEM SPECIALISTS



Webb

View[®]

Integrated Baggage
Handling Control System



Advanced sortation of baggage, including:

- 10 Digit IATA (BSM)
- Flight Number
- City Code
- Mail Tags
- Pier Tags
- Class of Service
- Down-line Destination
- Hold Bag Screening
- Late Bags

Combining over 80 years of material handling knowledge, over a decade of specific airport system experience and feedback from our baggage handling customers we have created the Webb-View Integrated Baggage Handling Control System, a state-of-the-art solution to increase baggage throughput while assuring bag tracking accuracy. Webb-View, the heart of our baggage handling control system, is an innovative solution that integrates the four key elements of baggage system control: **supervisory control, equipment control, manual encoding, and user interface.**

Supervisory Control

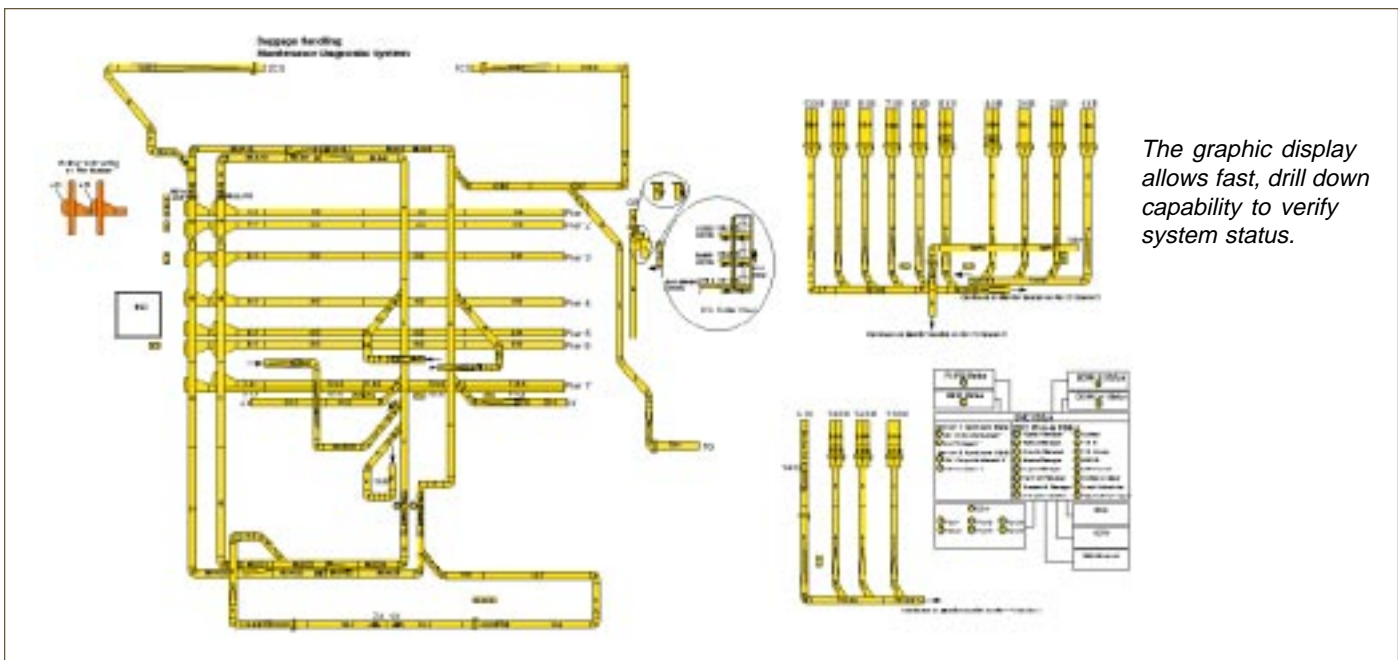
Webb-View supervisory control oversees the delivery of bag accurately, efficiently, and on time. Features include:

Bag Tag Translation from bar code tag to conveyor system destination

Host Interface to integrate the baggage system with inputs of flight status and baggage tag information from other systems

Data Collection of an unprecedented level of information on baggage history and system performance

An important element of the total supervisory control system is our use of a fault-tolerant redundant computer. This off-the-shelf solution provides bumpless transfer of processing power without custom software.



User Interface

Feedback from our customers enabled us to provide the Airport Industry's most user friendly, intuitive and informative interface. The Jervis B. Webb Company consulted with bagroom supervisors, facility managers and manual encode operators to identify their needs. The result is a powerful tool for data analysis and system control, with the look and feel of Microsoft® Windows™.

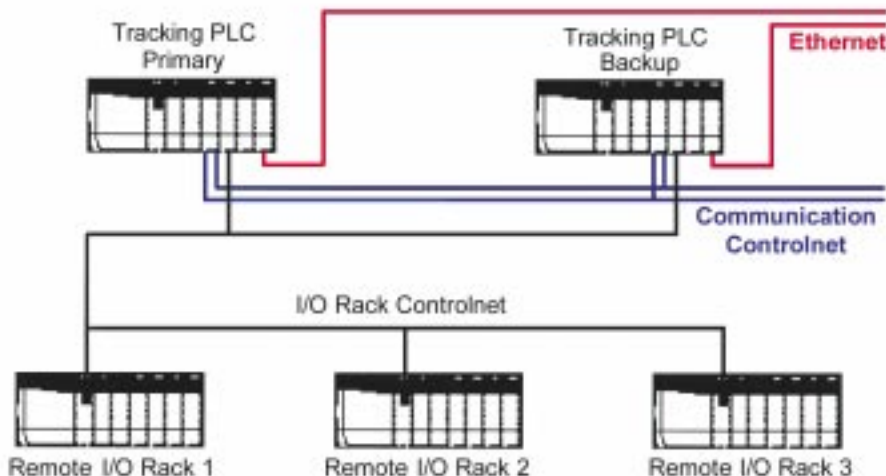
Graphical User Interface –The graphical user interface is easy to read and use. It can be configured to represent the system status with a number of monitors or just one monitor taking advantage of “drill down” capability. Text monitors are used, in concert with graphical status displays, to assure full alarm coverage.

Password Security – Multiple levels of password security are provided beginning with the login screen. Access to Webb-View information and functions is controlled at the individual user level.

Alarm Display – Highlighting the alarm and selecting the resolution button displays recommended procedures for resolving system problems.

Flight Schedule Management – An active flight schedule is maintained and displayed within a spreadsheet interface screen that allows the operator to utilize powerful database sortation algorithms by pointing and clicking. Flight schedules can also be imported from and exported to another computer by simply clicking on a button. This allows flight pier assignment scheduling to be done offline.

Baggage History - IATA baggage information is key to many aspects of bagroom and flight operations. Webb-View maintains a log of all IATA baggage information. It also maintains a history log that details every “bag event” within the system, and that data can be filtered to locate a specific bag's information. This information is valuable in troubleshooting Baggage Sortation Message (BSM) interfaces, missorted bags and equipment operation problems.



System can be configured with redundant PLCs, hot backup PLCs, and redundant data communication networks.

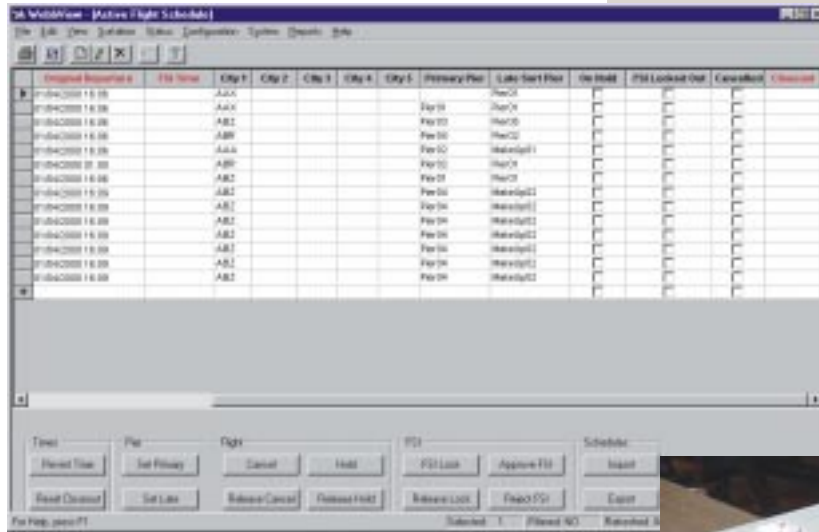
Equipment Control

Webb-View equipment control provides the functions to reliably run your baggage handling hardware. Features include: the Webb patented bag tracking technology, motor control sequencing, sortation, manual encode, bag tag scanning, and data collection.

Webb's proven bag tracking software is capable of capturing and integrating photo-eye, tachometer, and scanner data to allow intelligent jam control and optimized tracking that is tolerant of common bag mishandling events.

In addition, to increase reliability, our system can be configured with redundant PLCs and redundant data communication networks. In a hot back-up configuration, the back-up PLC is configured to shadow the primary PLC operation and takeover control, without loss of baggage tracking, in the event of primary PLC failure.

The PLCs support a semi-automatic mode of operation to provide fallback sortation capability. The Webb-View Manual Encode Touch Terminals maintain back-up flight schedules to support fallback sortation.



Webb-View active flight display.



Webb-View manual encode touch terminal

Webb-View Manual Encode Touch Terminal

The Webb-View Touch Terminal is the industry's most capable device for manual encoding. It provides stand-alone sortation, flight information and local fault annunciation. Combined with bar code scan gun operation, this manual encode station is a powerful device that is very user-friendly.

Large on-screen buttons allow operators to perform a number of different functions.

Flight Mode - the operator enters the flight number and the touch terminal displays the flight's destination cities for selection by the operator.

Direct Dispatch - the operator enters the pier number for the bag.

List Flight - brings up a scrollable display of active flights.

Show Status - displays a graphical representation of the manual encode station conveyors and their status.

The Webb-View Manual Encode Touch Terminal station is based on standard industrial PC technology. A Universal Encode Console (UEC) emulation unit is available for upgrade applications.

Our experienced control specialists provide and configure the PLCs and computers to meet your specific needs. After installation, validation, and system testing, we provide drawings, documentation, and training to ensure smooth operation of the new baggage handling system.

Jervis B. Webb Company

MATERIAL HANDLING SYSTEM SPECIALISTS



34375 W. Twelve Mile Rd., Farmington Hills, MI 48331-5624 USA

Phone: 1-248-553-1220 Fax: 1-248-553-1228

E-mail: info@jerviswebb.com www.jerviswebb.com

Webb-View® is a registered trademark of Jervis B. Webb Company. Microsoft® and Windows™ are trademarks of Microsoft Corp.

Bulletin #9226

Webb incorporates a diverse range of products and services, including:

- Controls and integration
- Baggage handling systems
- Mail sortation systems
- Flight kitchens
- On-site maintenance

ISO 9001 Registered

2000 ©Jervis B. Webb Company