

Gravity Roller Conveyor – A Low Cost Solution to Simple Material Handling Requirements

Gravity roller conveyors are widely used in unit load handling systems because of their simplicity, low unit cost, and ease of maintenance. Gravity roller conveyors can be applied in the form of level push-lines or graded lines using the force of gravity.

Gravity roller conveyors are an economical choice for short runs of loads up to 5000 pounds. With a wide range of straight and curved sections available, gravity roller conveyors are often used for spur or connecting lines in powered conveyor systems. Curves are available in straight and tapered roller styles.



Application

Operation:

Gravity transportation of unit loads via conveyor pitch or manual push. Storage Lanes, Load Accumulation, and Queue Stations.

Conveyable Products:

Wood, plastic, metal, fiberboard or corrugated pallets, all types of drums, bundled material, containers, fixtures, and bulky heavy unit loads.

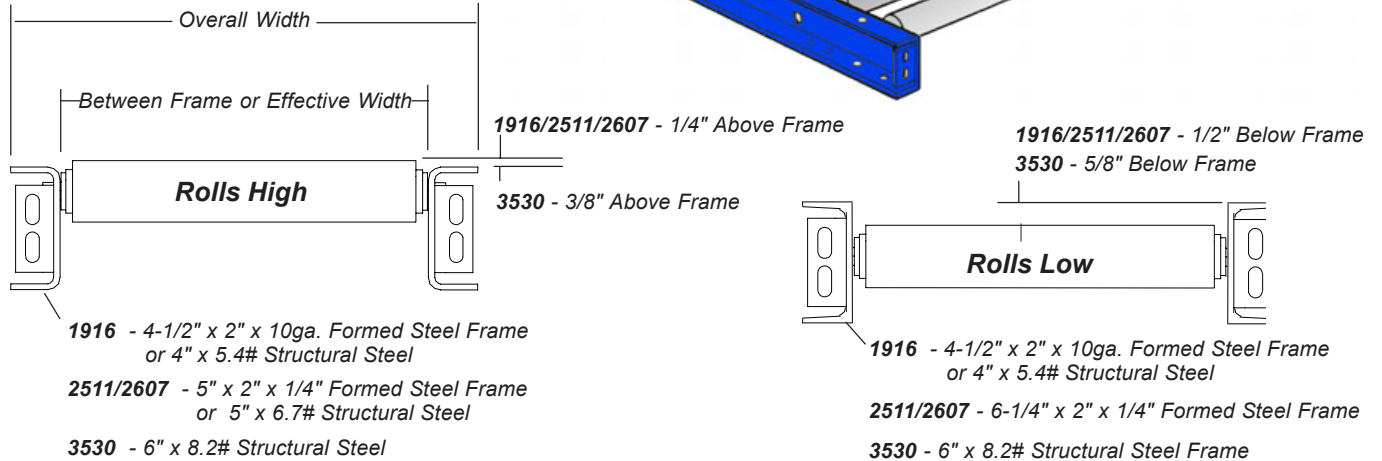
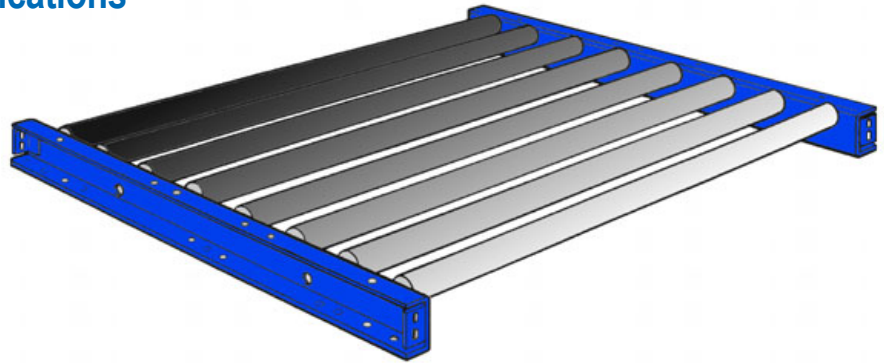
Environment:

Proven reliable in a wide range of manufacturing environments.

Features

- Modular based construction integrates easily with other equipment including: Chain Driven Live Roller, Pallet Accumulation Conveyor, Chain Conveyor, Turntables, and Chain Transfers.
- A wide range of standard widths (conveying surface), roller centers, and roller types are available.
- A wide range of optional equipment and accessory equipment can be added or inserted into conveyors.
- Load capacities from 500 to 5000 pounds.

Gravity Roller Conveyor Specifications



ITEM	MODEL	STANDARD	OPTION
Roller Tube	1916 2511 2607 3530	1.9" Dia. x 16 Gauge Steel 2-1/2" Dia. x 11 Gauge Steel 2-9/16" Dia. x 7 Gauge Steel 3-1/2" Dia. x 5/16" Wall Steel	
Axle	1916 2511-2607 3530	7/16" Hex - Spring Loaded 11/16" Hex - Spring Loaded 1-1/16" Hex - Cotter Pin Retained	Pin Retained Pin Retained
Bearing	All	Dry (D)	Sealed & Grease Packed (G)
Roll Set	1916 2511-2607 3530	1/4" High Above Frame 1/4" High Above Frame 3/8" High Above Frame	Rolls Low - Add 5-1/2" x 2" x 10 Ga. Formed Channel Rolls Low - Add 6-1/4" x 2" x 1/4" Formed Channel Rolls Low - Add 8" x 11.5# Structural Steel
Frame	1916 2511-2607 3530	4-1/4" x 2" x 10 Gauge steel 5" x 2" x 1/4" Formed Steel 6" x 8.2# Structural Steel	5" x 6.7# Structural Steel, 6" x 8.2# Structural Steel Special 6" x 8.2# Structural Steel
Connectors	All	Butt Couplings	
Roller Centers	1916-2511-2607 3530	3", 4", 6", 7-1/2" 6", 7-1/2", 12"	
Overall Width	All	Effective Width + 4"	
Effective Width	1916 2511-2607 3530	Widths Between 7" & 63" Widths Between 7" & 93" Widths Between 7" & 114"	
Bed Length	All	Lengths In Roller Center Increments	
Supports	All	5,000 Pound Capacity	
Paint	All	Heavy-Duty Blue - One Coat Self Priming	Special Color - One Coat or Two Coats
Options	All	Brake Rollers, Fixed End Stop, Roller End Stop, Shot Guards	

For further information and pricing, please contact:

ISO 9001 CERTIFIED 34375 W. Twelve Mile Road
Farmington Hills, MI 48331 USA
Phone: 1-248-553-1220 FAX: 1-248-553-1228
www.jervisbwebb.com

Bulletin No. 5068-020304 © Copyright 2003 Jervis B. Webb Company

Jervis B. Webb Company
MATERIAL HANDLING SYSTEM SPECIALISTS

